



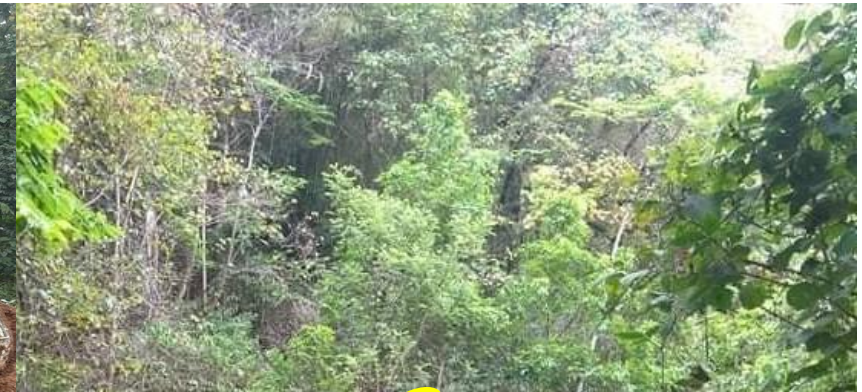
DCA NCA

actalliance

MYANMAR JOINT COUNTRY PROGRAMME

HARP-F

Humanitarian Assistance and Resilience Programme Facility



Survivors and Community

Led Response



LOCALISATION IN PRACTICE

- Supported 131 grants to different community groups across Northern Shan and South East which were discovered by the Participatory Action Learning in Crisis (PALC) facilitators from the partner organizations.
- Coordination mechanisms of the frontline responders, which were already there before the NGOs exist, were also enhanced and broadened their reach and consistency.



DCA



NCA

octobance
MYANMAR
JOINT COUNTRY
PROGRAMME

HARP-F
Humanitarian Assistance and
Resilience Programme Facility

PREREQUISITES TO LOCALISATION

- Advocating the donors to make the systems and mechanisms flexible and accessible for the frontline responders, local and community based organizations.
- To unlearn what you have kept at the back of your head for several years.
- Open your mind to learn the survival methods of each different community that were practised long before the NGOs are there. Prepare yourself.
- Try to bridge yourselves between the donor systems and community of practices.
- Trust building in different levels with various stakeholders.
- Appreciative enquiries can support you in reaching out to different groups in the community who have supported themselves to survive different harsh environments. (Conflicts, environmental & land issues, political and economic oppressions, etc...)



DCA



NCA

Octobance
MYANMAR
JOINT COUNTRY
PROGRAMME

HARP-F
Humanitarian Assistance and
Resilience Programme Facility

LESSONS LEARNED FROM SCLR METHOD

Positive points

- Facilitation skill is vital
- Easy Prioritization of the pressing needs of the community in a short period.
- Enabling the communities and local groups to connect, strengthen network building and capacity sharing at the very grass root level
- Reshaping of the relationships between INGO, L/NNGO, CSOs and communities

Lessons

- Trust
- Time frame of the implementation period can have impact on the result.
- Community led participatory monitoring and accountability enhancement mechanisms.
- Prerequisites/predeterminations
- Cluster/sector approach

- Multi Sector approach

